



SUNON
TECHNOLOGY



Bulk Messaging Device



In today's fast-paced digital landscape, organizations need reliable and efficient tools to communicate with large audiences in real time. The Bulk Messaging Device is a flexible and mobile-ready communication platform designed to support high-volume message delivery across multiple channels. It enables organizations to share announcements, notifications, and important updates with speed, consistency, and operational ease.

1. SMS Public Message Announcement System

A centralized messaging system designed to deliver high-volume SMS communications to multiple recipients simultaneously. This solution supports organizations in executing outreach initiatives such as promotions, alerts, and public information dissemination in a structured and efficient manner.

Main Functions

- Supports operation across 2G, 3G, 4G, and 5G (NSA) mobile network environments
- Compatible with multiple GSM network providers
- Utilizes standardized SMS file formats for streamlined message management



Technical Data

RF Coverage	GSM, WCDMA, LTE
Antenna	Magnetic mounted omni and directional antenna
Working Frequency	800 MHz, 900 MHz, 1800 MHz, 2100 MHz, 2300 MHz
Coverage Area	Up to 300 m radius (depending on field conditions)
IMSI Processing Capacity	Up to 1500 numbers/hour
Power Supply	220V AC
Control Mechanism	Operated via laptop

2. WhatsApp Public Message Announcement System

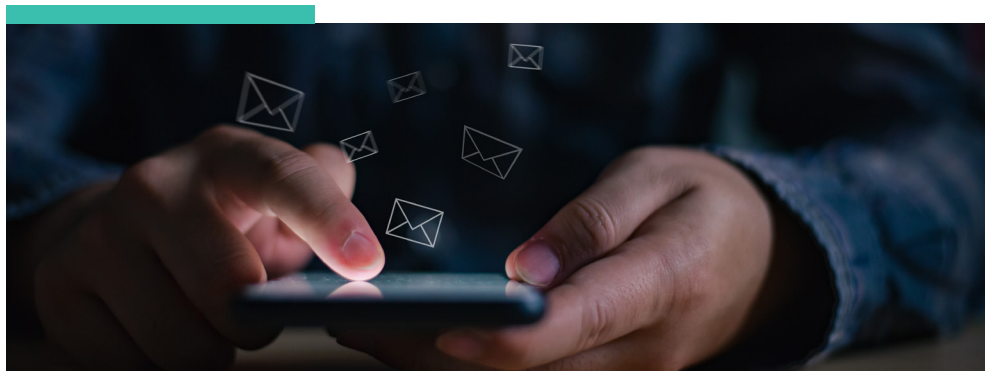
A region-based messaging platform designed to support targeted communication through WhatsApp. It enables organizations to deliver rich content—including text, images, and video—within predefined service areas, making communication more engaging and informative.

The system incorporates adaptive delivery logic aligned with platform usage guidelines, helping maintain stable performance and consistent message distribution during high-volume operations.



Main Functions

- Supports operation within 5G (NSA) mobile network environments
- Compatible with multiple GSM network providers
- Supports text, image, and video messaging formats
- Designed for stable and consistent performance during large-scale messaging



Technical Data

Messenger Support	WhatsApp
Antenna	Omni and directional
Working Frequency	1800 MHz, 2100 MHz, 2300 MHz 2300 MHz
Coverage Area	Up to 300 m radius (depending on field conditions)
Broadcast Capability	Up to 2000 messages/hour
Power Supply	AC 220V
Control Mechanism	Operated via laptop
Client Detection	Automatically identifies WhatsApp-enabled numbers Reliable, Flexible, and Ready for Deployment